

WESTERN FISHBOAT OWNERS ASSOCIATION

P.O. Box 992723
Redding, CA 96099



Ph. (530) 229-1097
M. (530) 355-3151

wfoa@charter.net
<http://www.wfoa-tuna.org>

WFOA Members:

The albacore season off the west coast began a little late, and is probably at its peak this week. Changes to fishing, markets, and management have been happening almost daily. Clarifications of these issues are in this newsletter.

NOTICES:

Tonnage Assessment 2022: WFOA again is collecting a voluntary tonnage assessment for the 2022 albacore season. Member response to these requests will determine the future of WFOA going through the 2022 season and beyond. Of course good catches would certainly help out all. We encourage members to participate and send in \$20/ton to WFOA Albacore Assessments, POB 992723, Redding, CA 96099. Or email or mail credit card information. Thanks.

US/Canada Treaty Issues: Negotiations with Canada will be starting later this fall as the present regime of three years. The present regime ends on September 15th for Canadian boats in U.S. waters and October 31st for U.S. boats in Canadian waters. WFOA is interested in any thoughts members may have. Treaty requirements for U.S. vessels are included at the very end of this newsletter.

WFOA Manager Search: My term ends at the end of this year. Any short term after that would be mainly transition. The WFOA board will need to select a new manager or change the WFOA operating procedures to fit the times. Board direction on these needs to happen soon after the season. I have included a manager job inquiry for distribution enclosed.

PCFFA: Mike Conroy, consultant for AAFA and WFOA has vacated his position of director of PCFFA. He will be devoting more time to Responsible Offshore Development Alliance (RODA) and Wind Energy issues, which are threatening ocean access. This move will not affect his commitment to AAFA or WFOA.

August 31, 2022

FISHING: Despite a hopeful beginning in the albacore market this season supply chain issues and lack of cold storage and containers is creating major difficulties at this time. Large volume of sockeye and chum salmon have filled cold storage space in the NW. A cutback of China's imports of hogs from Canada has resulted in space limitations in Canadian cold storages plus berries and other commodities. In the U.S where a major drought is happening, is resulting in filling facilities as cattle is butchered up to a year short of maturity. The continued backup in ports on the west coast is not helping matters either. Buyers are trying to work through it and it will resolve itself at some point. The cost of money for purchasing is also increase with inflation and borrowing rates. Market demand seems to be there but logistics are very bad right at this point.

Prices for blast have been all over the board, with blast from \$4,000 to \$6,000 but with most selling for \$5,100 to \$5,500. Brine has been between \$3,700 to \$4,500, depending on the day and container and cold store space on any given day prices may fluctuate and boats will have to wait at buying stations. This changes almost daily. Unlike in past years there is markets for the product but all the above issues have turned the situation sour.

As of August 30th about 3,000 tons have been landed in U.S. ports. There is also tonnage on larger vessels

DIRECTORS 2022

BRITISH COLUMBIA
VACANT

PUGET SOUND
KARL JOHNSON
(V-President)
JOE MALLEY
JEREMY BROWN
BRUCE SAMUELSON

AST / WESTPORT
LOUIE HILL
ED BITTNER
DOUG FRICKE
(President)
LIBIE CAIN
RON HARPER

COOS / NEWPORT
HENRY deRONDEN
SHAWN RYAN

EUREKA / FT. BRAGG
AARON NEWMAN

SF / OAKLAND
VACANT

MOSS LANDING
TOM HART

MORRO BAY
WAYNE MOODY

SOCAL/HAWAII
JOHN LAGRANGE
ROB McADAM

NEW ZEALAND
VACANT

TERESA REEVES
(Secretary / Treasurer)

from a month of fishing as well as smaller vessels selling off their vessels in various ports. Thus far the catch is better than 2021 at this point in time.

Weather has generally been good but lacking hard NW winds that usually occur this time of the year that create upwelling. Sea surface water temps have been creeping up, now in the 65 F- 68 F-degree range.

MANAGEMENT: The Inter-American Tropical Tuna Commission (IATTC), in Phoenix, Arizona (USA), adopted a Harvest Strategy, RESOLUTION C-22-04 for NP albacore tuna which will lead to actual harvest control rules by the end of 2023. Coordination with the WCPFC will have to now occur in order to manage across the stocks range.

Some highlights of the resolution, which is available on www.wfoa-tuna.org under management, permits, and fish report buttons.

Maintain Spawning Stock Biomass (SSB) above the Limit Reference Point, with a probability of at least 80% over the next 10 years.

Maintain depletion of total biomass around historical (2006-2015) average depletion over the next 10 years.

Maintain fishing intensity (F) at or below the target reference point with a probability of at least 50% over the next 10 years.

To the extent practicable, management changes (e.g., catch and/or effort) should be relatively gradual between years.

Target reference point (TRP) = F45%, which is the fishing intensity (F) level that results in the stock producing 45% of spawning potential ratio (SPR)

Threshold reference point (SSB_{threshold}) = 30%SSB_{current}, F=0, which is 30% of the dynamic unfished spawning stock biomass

Limit reference point (LRP) = 14%SSB_{current}, F=0, which is 14% of the dynamic unfished spawning stock biomass

By 2023, the Commission shall adopt harvest control rules as part of the harvest strategy

The Pacific Fisheries Management Council: The Pacific Fishery Management Council (Council) will meet September 6-14 in Boise, Idaho. Both the Highly Migratory Species Advisory Subpanel (HMSAS) and the Highly Migratory Species Management Team (HMSMT) are scheduled to meet in person. Both the HMSAS and the HMSMT will meet Saturday through Tuesday, September 10-13. HMS topics are on the Council agenda on Tuesday, September 13. Meeting information will be posted on the Council's September 2022 Meeting webpage.

Summaries of HMS topics and other items of interest on the Council agenda are listed below.

I.1 National Marine Fisheries Service Report

National Marine Fisheries Service (NMFS) will brief the Council on recent regulatory activities.

I.2 International Management Activities

Several Regional fishery management organization (RFMO) meetings of interest occurred over the summer and outcomes will be reported on. These include The International Scientific Committee for Tuna and Tuna-Like Species in the North Pacific Ocean (ISC), Inter-American Tropical Tuna Commission (IATTC), and the IATTC and Western and Central Pacific Fisheries Commission (WCPFC) Northern Committee (NC) Joint Working Group on the Management of Pacific Bluefin Tuna (JWG). The next NC meeting will occur online in October, giving the Council the option to provide input to the U.S. delegation at its upcoming meeting. The WCPFC Permanent Advisory Committee (PAC) is also meeting in October. Council member, Christa Svensson (WCPFC Commissioner) and staff member Kit Dahl (ex-officio PAC member) will be attending. The PAC provides input to the U.S. Commissioners to the WCPFC, whose regular session occurs annually in early December. See: <https://www.pcouncil.org/>

Marine Stewardship Council (MSC): Albacore Buyers using the WFOA certification in 2022 for troll and pole and line albacore need to renew the designated buyer's agreement with WFOA. As of today most have. Once we receive the signed agreement, WFOA will post the designated buyers on the WFOA website under the MSC button. We appreciate the support.

WFOA and AAFA hold this certificate jointly. AAFA generally applies it only to their vessels and WFOA contracts participating buyers on an annual basis. WFOA collects a small fee on all albacore landed at the contracted buyer's facility to pay for annual audits and recertification and to help costs of admin, costs of attending management meetings that support the MSC process. We try to keep our process simple and this has worked well over the past 12 years, but unfortunately with low albacore landings over the past 3-seasons it has depleted the account.

At this time WFOA does not have enough funding in the MSC account to do recertification but are hoping for a good season in 2022 The MSC re-certification will begin in 2023 and we expect it to cost around \$100k or more. In 2010 through 2012 WFOA did charge \$20/st to designated buyers to build up the accounts and carry out annual audits and a couple recertifications. We will in the coming months see this season's collections and what buyer's want to do moving forward. There could be a one-year additional fee on those that want to participate through WFOA.

List of 2022 buyers that have signed the annual contract are listed on www.wfoa-tuna.org, and under the MSC button.

Pacific Marine Expo: November 17-19, 2022 / SEATTLE, LUMEN FIELD EVENT CENTER from National Fisherman

It's official, registration is open for the 2022 edition of the Pacific Marine Expo!

The past few years have been tumultuous for anyone with commercial fisherman in their job title. From COVID-19 shutdowns to the uncertainty of offshore wind leases and the implications for the industry to bright spots like the record setting sockeye salmon run in Bristol Bay.

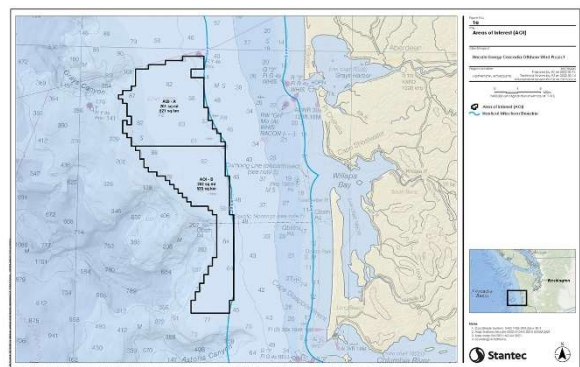
Along with our partner National Fisherman, Pacific Marine Expo prides itself in being there for you no matter what, to buy and to learn all the things you need to support your commercial fishing business.

Registration is fast and free by clicking the button below, we can't wait to see you in Seattle.*

See: <https://www.pacificmarineexpo.com/>

Hecate Energy Releases Wind Lease Request off Southern Washington: Just one example of this gold rush and is affect to vital fishing areas all over the U.S. fishing grounds.

A Chicago-based energy company is the latest company to file an unsolicited lease request for the gold rush of West Coast offshore wind. This is the second such request for the waters off Washington. Hecate Energy hopes to develop a project called Cascadia Offshore Wind off southern Washington. The proposal and request to the Bureau of Ocean Energy Management identifies two areas, one that is 201 square miles and the other at 202 square miles for a total of 403 square miles. . .



U.S. / CANADA ALBACORE TREATY 2022:

U.S. Vessels wishing to fish in Canadian waters pursuant to the treaty must register with NMFS at least 7 days prior to the first planned day in Canada by contacting NMFS at (562) 980-4238 or email albacore.fish@noaa.gov, as well as contacting Prince Rupert CG (250) 627-3074 * prior to entering and when exiting Canadian waters. Additional requirements and instructions can be found in the Guide for Complying with U.S. - Canada Albacore Treaty.

NOTE – 12 miles: U.S. vessels are not allowed to fish within the 12nm, territorial sea of Canada, and Canadian vessels cannot fish within the territorial sea of the U.S.

Number of Vessels: 45 Canadian Vessels in US EEZ, Historical Number U.S. Vessels in Canadian EEZ.

Fishing Season: Canadians access to U.S. waters is from June 15 - September 15, U.S. vessels can fish in Canadian waters outside of 12nm June 15 - October 31.

Port Access Season: U.S. boats June 15 - Dec 31 under regime. Jan 1 - June 15 with approval and obtaining the application below.

Canadian EEZ Permits Required by U.S. Boats: All U.S. North Pacific Albacore Tuna fishing vessels will need Canadian EEZ License, before entering Canada's EEZ to enter a Canadian port (for example to pick up foreign crew) or to fish. Since neither the license to enter the Canadian EEZ or to fish in the Canadian EEZ have a fee, it is advisable to obtain both at the same time in case the vessel decides unexpectedly to later fish in the Canadian EEZ.

The requirement applies to ALL U.S. vessels fishing North Pacific albacore tuna in Canada's EEZ under the Canada-U.S. Albacore Tuna Treaty.

The license will allow U.S. North Pacific albacore tuna vessels to enter and fish in Canada's EEZ in accordance with Canadian law.

The EEZ tuna fishing license will need to be applied for on an annual basis.

The same application form is used to apply for both port access and fishing licenses. No new forms are required.

There are no fees for either license for U.S. harvesters accessing Canada's EEZ, either to fish or to access port.

A harvester could potentially have two licenses: one for port access and one for tuna fishing.

If you have previously applied for an EEZ port access license, only an additional box (box #7) needs to be checked to apply for a fishing license.

For faster service include an email and phone number. Email it or fax: fishing-peche@dfo-mpo.gc.ca (Specify PACIFIC REGION in subject line) fax, Fax: 604-666-5855 phone: 1-877-535-7307 (ask for the PACIFIC REGION)

License application forms can be found here:

U.S. Site: <https://tinyurl.com/2qtdkex8> or;

Canada Site: <https://tinyurl.com/yc78682d>

If you have any questions, please feel free to contact

Jason.Gibson@dfo-mpo.gc.ca / Tel: 250-754-0206

Additional Info on U.S./Canada Treaty: Pursuant to the Treaty, U.S. fishing vessels are authorized to enter, land their catches, sell or transship their catch, obtain fuel, supplies, repairs and equipment only at Coal Harbour, Port Hardy, Prince Rupert, Victoria, Vancouver and Ucluelet ports.

Vessels will be required to clear with Canadian Customs and Border Services Agency prior to any person or cargo being allowed to disembark the vessel. In addition, all U.S. vessels must obtain Authorization for Port as described previously.

Please note that the vessel master is required to sign the EEZ license application form. It is recommended that the vessel master and Canadian authorized agent work together to ensure that the EEZ application is signed prior to submission. Applications missing signatures from the vessel master will be considered incomplete. Applications that have already been signed and submitted may be amended (e.g. for updated entry/exit dates) as required. **E-Copies will not be accepted - only PAPER Copies**

General Treaty Info: <http://tinyurl.com/lopjffb>

Summary:

Vessels need to put themselves on the NMFS list

Obtain a Canadian EEZ permit which can also include port access **PAPER COPIES ONLY**

Check in with Canadian CG 48 hours prior to entering and leaving

Fill out logbooks and turn them in

Good Fishing and Stay Safe!

© All material in this newsletter is copyrighted and may not be used, copied, or reprinted without specific written permission of Western Fishboat Owners Association